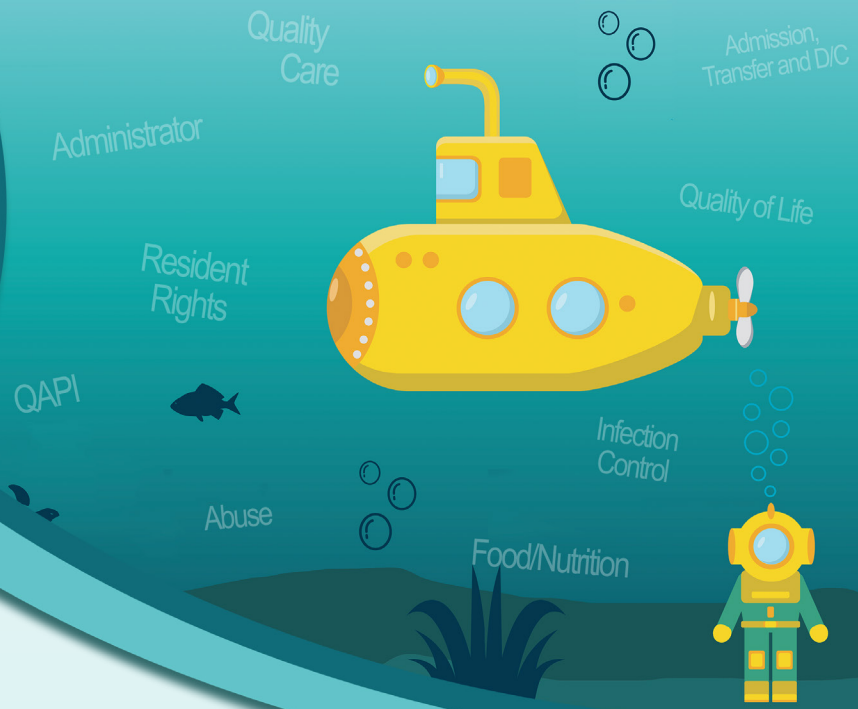


DEEP DIVE

Into Federal Regulations in a Year



This series is designed for those new to the long-term care industry or for those who would like a more comprehensive understanding of the federal regulatory requirements. Over the course of 12 monthly sessions, this series will provide a deep dive into learning about key federal regulations for long term care facilities. Resident rights, abuse/neglect/exploitation, admission/transfer/discharge, Resident assessment, comprehensive resident centered care plan, quality of life, quality of care, physician services, nursing services, behavioral health, pharmacy services, lab/radiology/diagnostic services, dental services, food/nutrition services, specialized rehab services, administration, QAPI, Infection Control, Compliance and ethics program, physical environment, and training requirements regulations and Interpretive guidance will be covered.

What to Expect:

In depth insights into LTC federal regulations for survey success.

Target Audience:

Nursing Home Administrators, Director of Nursing, Nursing Leadership, Facility Department Managers, RAI Coordinator, QA Director.

Contact Hours:

One (1.8) contact hours each session; check your state association registration page for details on additional CE. NAB approved through Proactive LTC Consulting. KBN approved nursing hours.

PRESENTED BY

Shelly Maffia, MSN, MBA, RN, LNHA, QCP, CHC, CLNC, CPC
Director of Regulatory Services

Shelly Maffia is a Registered Nurse and Licensed Nursing Home Administrator with experience serving as an Administrator, Director of Nursing, and as a multi-site Corporate Nurse Consultant. She holds AAPACN's QAPI Certified Professional (QCP) credential, is certified in healthcare compliance through the Healthcare Compliance Association (HCCA) and is an Infection Preventionist. She presents extensively on LTC clinical, regulatory, and compliance matters.

QUESTIONS

2023
SERIES OVERVIEW

Webinar start time:
2:30 pm Eastern Time

JANUARY 10	§483.10 Resident Rights Requirements
FEBRUARY 14	§483.12 Freedom from Abuse, Neglect, and Exploitation
MARCH 14	§483.15 Admission Transfer & Discharge Rights
APRIL 11	§483.20 Resident Assessment & §483.21 Comprehensive Person-Centered Care Plan Requirements
MAY 9	§483.24 Quality of Life Requirements
JUNE 13	§483.25 Quality of Care Requirements
JULY 11	§483.30 Physician Services & §483.35 Nursing Service Requirements
AUGUST 8	§483.40 Behavioral Health Service Requirements
SEPTEMBER 12	§483.45 Pharmacy Services Requirements
OCTOBER 10	§483.50 Laboratory Radiology and Other Diagnostic Services & §483.55 Dental Services
NOVEMBER 14	§483.60 Food and Nutrition Services
DECEMBER 12	§483.70 Administration Requirements

QUESTIONS

Email schca@schca.org
or call (803) 772-7511